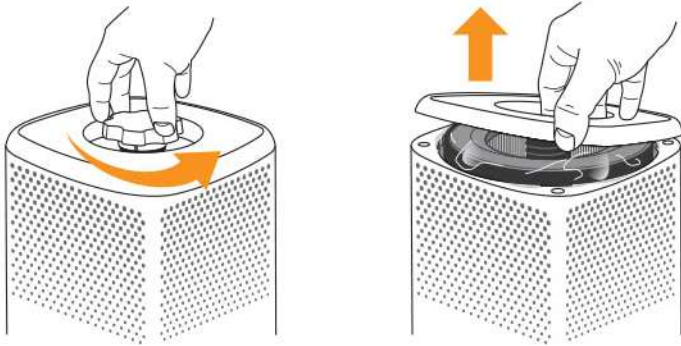
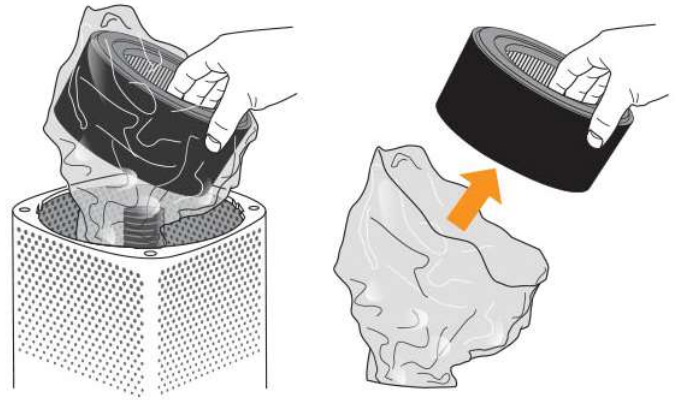


QUICKSTART



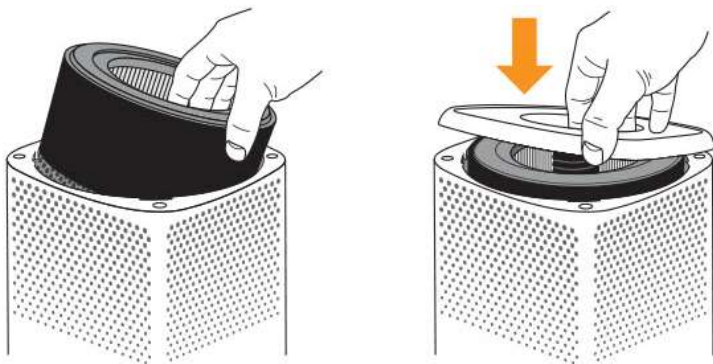
FLIP & UNSCREW

Flip the unit upside down. Twist the gear shaped cap off from the bottom of the unit by turning it counter-clockwise to the left. Lift the filter cover from the bottom of the unit.



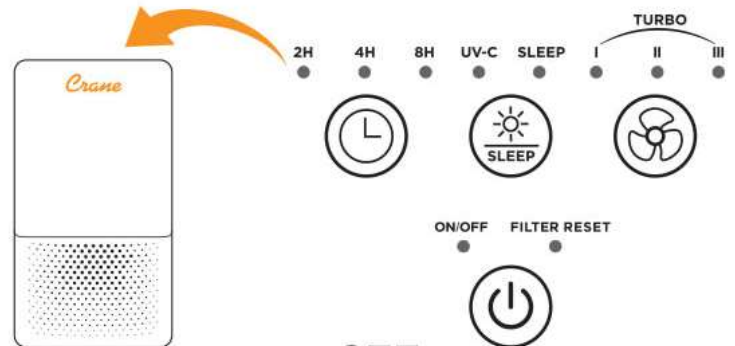
REMOVE BAGGED FILTER

Take the bagged filter out of the base of the unit and remove filter from the plastic bag. Discard plastic bag.



INSTALL FILTER

Replace the unbagged filter to the base of the unit. Place the filter cover back onto the base and screw the gear shaped cap back onto the black peg by tightening it clock-wise to the right.



SET

Once the gear shaped cap is secured, flip the unit right side up and place on a flat solid surface. You can now set the unit at the desired settings with the controls located on the top of the unit.

Please contact us first with any questions or problems you have about the operation of your Crane air purifier.



1-888-599-0992



questions@crane-usa.com

Crane

TOWER AIR PURIFIER
FOR THE FOLLOWING MODEL :
EE-5067



If you have any questions about the operation of your purifier, please contact Crane Customer Care.

Toll Free: 888-599-0992

Email: customer-service@crane-usa.com



**PLEASE READ AND SAVE ALL INSTRUCTIONS TO ENSURE
THE SAFE AND EFFECTIVE USE OF THIS PURIFIER.**

SAVE YOUR DATED PROOF OF PURCHASE!

[You will need this in case of warranty]

staple
tape
or paperclip
your
receipt
HERE

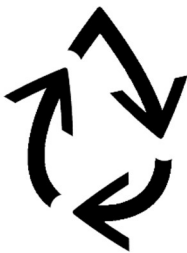


**PLEASE READ AND SAVE ALL INSTRUCTIONS TO ENSURE
THE SAFE AND EFFECTIVE USE OF THIS PURIFIER.**

TABLE OF CONTENTS

Table of Contents & Sustainability	P. 1
Safety Instructions	P. 2-4
List of Main Parts	P. 5
Technical Specifications & Air Purifier Filters	P. 6
Operation & Use, Replacing the Filter	P. 7-8
Replacing the UV Bulb	P. 8-9
Maintenance	P. 9-10
Customer Care & Troubleshooting	P. 10
Warranty	P. 11

CRANE & SUSTAINABILITY



Crane USA is dedicated to your environment both inside and outside your home. We know if cleaned and maintained properly, our products last for years helping to reduce unnecessary use of resources and emissions making new products.

The Crane manual you are holding is from recycled materials with no added finishes or harmful dyes. If the purifier should no longer operate, please be sure to dispose of it in an environmentally friendly way by taking it to a public collection point.

PLEASE DO NOT PLACE BROKEN PURIFIERS WITH YOUR REGULAR HOUSEHOLD WASTE.



IMPORTANT SAFETY INSTRUCTIONS

WARNING! READ AND SAVE THESE INSTRUCTIONS. Failure to follow all of the instructions listed below may result in electric shock, fire and/or serious personal injury.

1. To avoid fire and shock hazard, plug the appliance directly into a 120V AC electrical outlet.
2. Never operate the unit with a damaged cord or plug.
3. Keep cord out of heavy traffic areas. To avoid fire hazard, NEVER put the cord under rugs, or near heat registers, radiators, stoves, or heaters.
4. Always place the air purifier where it is not easily knocked over by persons in household.
5. Never touch the air purifier with wet hands. **ALWAYS plug and unplug unit with dry hands.**
6. Do not operate the product in any greasy environment such as a kitchen. This product is not intended to filter oil or grease from air.
7. Do not use air purifier in bathrooms or other humid environments, near fireplaces or in areas where flammable or combustible vapors or products may exist.
8. Always unplug the power cord from electrical outlet when the air purifier is not in use, before cleaning, inserting or removing parts or before moving to another location.
9. NEVER run air purifier until it is fully assembled.
10. NEVER drop or insert any object into any openings.
11. Use appliance only for the intended household use as described in this manual. Do not use outdoors.
12. Never use the power cord to pick up, carry, drag, pull, or lift the air purifier. Do not pull the cord against or around sharp corners or edges. This could result in injury to the user and/or damage the cord.
13. Never pull on the cord itself to unplug from power outlet.
14. ALWAYS turn unit off before unplugging.
15. Never block the air openings, or place on soft surface, such as a bed or sofa, as this could cause the unit to tip over thus blocking the air intake opening.
16. DO NOT place anything on top of unit.
17. NEVER use detergents, gasoline, glass cleaner, paint thinner or other household solvents to clean any part of the unit.
18. Always place the unit on a smooth, flat, level surface, and away from direct sunlight. Keep the cord away from heated surfaces and areas where it could be walked on or tripped over. Unplug the unit when not in use and whenever you clean or move the unit.



UV Bulb Information

19. **NEVER** look directly at the UV Bulb while it is illuminated doing so could cause temporary or chronic damage to your eyesight or may even result in loss of vision. UV Bulb is harmful to bare skin and eyes. To prevent exposure to ultraviolet light, disconnect the power to the unit before servicing any part of the air purifier. **NEVER** operate air purifier if the housing is damaged or cracked.
20. **DISPOSAL** If the UV Bulb breaks, turn unit off. **NEVER** operate the unit with a broken UV bulb. **DO NOT** use a vacuum to pick up broken bulb glass or handle broken bulb with your hands. Sweep debris into a plastic bag and dispose properly. Contact your local waste management authority for instruction regarding recycling and the proper disposal of the old bulb.

SAVE THESE INSTRUCTIONS!

GENERAL SAFETY INSTRUCTIONS



WARNING! Read and understand all instructions. Failure to follow all instructions listed below may result in electric shock, fire or serious personal injury. The warnings, cautions, and instructions discussed in this instruction manual cannot cover all possible conditions and situations that may occur. It must be understood by the user that common sense and caution are a factor which cannot be built into this product, but must be supplied by the user.

THIS AIR PURIFIER IS NOT A TOY!

Do not let your child play with this product. Serious injury and electrocution might be possible. This air purifier has to be operated by an adult only. Children should be supervised to ensure that they do not play with the air purifier.

SAVE ALL INSTRUCTIONS!

CAUTION: A short Power Supply Cord is provided to reduce the risk of personal injury resulting from becoming entangled in or tripping over a longer cord. Extension cords are available from local hardware stores and may be used if care is exercised in their use. If an extension cord is required, special care and caution is necessary. Also the extension cord must be (1) marked with an electrical rating of 125 V and at least 13 A., 1625 W., and (2) the cord must be arranged so that it will not drape over the countertop or tabletop where it can be pulled on by children or accidentally tripped over.

ELECTRIC POWER

If the electric circuit is overloaded by other appliances, your purifier and/or appliances may not operate properly. The purifier should be operated on a separate electrical circuit from other operating appliances.

POLARIZED PLUG

This purifier has a polarized plug (one blade is wider than the other). As a safety feature to reduce the risk of electrical shock, this plug is intended to fit in a polarized outlet only one way. If the plug does not fit fully in the outlet, reverse the plug. If it still does not fit, contact a qualified electrician. Do not attempt to defeat this safety feature.



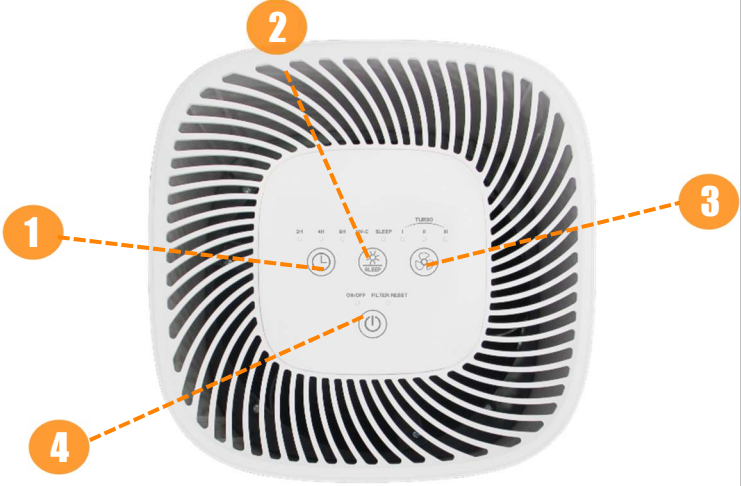


SAFETY WARNING

Although your purifier is easy to operate, for your safety, the below warnings must be followed:

1. Do not place the purifier near a heat source.
2. Never leave the purifier unattended while connected to the electrical outlet.
3. To avoid any accidents, never cover the air grill when the purifier is in operation.
4. Use the purifier on a stable surface away from water.
5. Do not unplug from the wall socket by pulling on the supply cord.
6. The purifier must be unplugged:
 - A. Before any cleaning or maintenance is performed.
 - B. After each use.
 - C. If it appears to be faulty.

THIS PRODUCT IS INTENDED FOR HOUSEHOLD USE ONLY.

LIST OF MAIN PARTS

<p>Fig. 1 (Control Panel)</p> <ol style="list-style-type: none">1. Timer Button2. UV-C/Sleep Button3. Fan Speed Button4. Power Button	 <p>A top-down view of the control panel, which is a white square with rounded corners and a black grille. Four orange callout boxes with numbers 1, 2, 3, and 4 are connected by dashed lines to specific buttons on the panel. Callout 1 points to a timer button, 2 to a UV-C/Sleep button, 3 to a fan speed button, and 4 to a power button. The panel also features a 'DEODOR. FILTER RESET' button and a 'TIMER' dial.</p>
<p>Fig. 2 (Main)</p> <ol style="list-style-type: none">5. Air Outlet6. Air Intake Vent	 <p>A front view of the main unit, a white cylindrical air purifier. Two orange callout boxes with numbers 5 and 6 are connected by dashed lines to the top and bottom of the unit. Callout 5 points to the air outlet at the top, and callout 6 points to the air intake vent at the bottom. The brand name 'Crane' is visible on the front panel.</p>
<p>Fig. 3 (Bottom)</p> <ol style="list-style-type: none">7. Carbon Coated Filter & HEPA Filter	 <p>A view of the bottom filter compartment, showing a white cylindrical housing with a black top cover. The filter is a combination of a carbon-coated filter and a HEPA filter, with a central black component.</p>

TECHNICAL SPECIFICATIONS

Rating Voltage	120 V 60 Hz
Power Supply	45 W
UV Bulb	3 W
Weight	6.15lbs

AIR PURIFIER FILTERS:

Level 1: Carbon Coated Filter

The purpose of this filter is to capture initial dust and allergen particles. It helps extend the life of the HEPA filter by removing large particles before they can get to the HEPA filter. You will find visible dust, hair, and lint in the particle filter.

NOTE: See Maintenance instruction for the filter.

Level 2: HEPA Filter

HEPA stands for High Efficiency Particulate Air. The inlet grill of your air purifier draws in dirty air. Crane's air purifier true HEPA filter removes at least 99.97% of all particles as small as 0.3 microns. Microns are used to measure the size of these microscopic airborne particles.

Allergens such as pollen, smoke, animal dander, mold spores, and dust get trapped in the HEPA filter.

NOTE: See Maintenance instruction for the filter.

Level 3: UV Bulb

The ultraviolet bulb helps reduce germs from growing in the HEPA filter.

NOTE: Blue UV Indicator Light indicates that the UV Bulb is ON unless the unit is set to Sleep Mode.





BEFORE USE

1. Remove plastic covering from the filter.
2. Select a firm, level & flat surface to place the purifier. For proper air flow, locate the unit at least 3 feet from any wall or furniture.
3. Do not place the purifier in close proximity to electronic devices that are sensitive to electrical fields.
4. Do not place the unit on metal shelving. Air purifier may be placed on floor, nightstand, table or desk. Make sure the outlet grill faces away from the nearest wall or furniture.
5. Make sure the intake and outlet grills are not blocked
6. Plug into grounded 120V outlet. (*See Safety Instructions*)

OPERATION & USE

OPERATING INSTRUCTIONS:

1. Press Power Button to turn on and off the unit.
2. Press Fan Button to select I, II, III or Turbo. Press once for III, press twice for Turbo, press three times for I and press four times for II. All lights will illuminate on the Turbo setting.
3. Press UV/Sleep Button to control UV Bulb and Sleep Mode. Press once to turn on UV bulb, press twice for Sleep Mode, press three times to turn UV bulb off. Press four times to de-activate Sleep Mode. In Sleep Mode the light blinks 10 times and all indicator lights will go off. When the purifier goes into sleep mode the fan setting automatically defaults to I speed. To de-activate the sleep mode press any button on the control panel.

NOTE: *Once item is unplugged the sleep mode needs to be reset*

4. Press the Timer Button to operate in intervals of 2 hours, 4 hours and 8 hours. The unit will turn off when scheduled operating time has elapsed. To go back to a continuous run time, press the timer button until there are no more indicator lights lit up.

IMPORTANT NOTE:

When the unit is not in use, please turn the unit off and unplug.



REPLACING THE FILTER

When the Filter Reset indicator lights up solid, it is an indication to replace the filter. Once you have replaced the filter, hold the POWER button down for 5 seconds to reset the system. On average, the Filter needs to be replaced every 3-6 months. Filter life will depend on air quality and usage.

1. ALWAYS turn off and unplug the air purifier from power outlet before replacing the filter.
2. Turn the unit upside down, unscrew the base cover.
3. Discard the old filter. DO NOT attempt to wash the filter. Insert the filter into the unit.
4. Once you have replaced the filter, screw the base cover back on and turn the unit right side up. Hold the POWER button down for 5 seconds to reset the system.

NOTE: Replacement HEPA Filter #HS-1944 can be purchased online at

www.crane-usa.com

REPLACING THE UV BULB


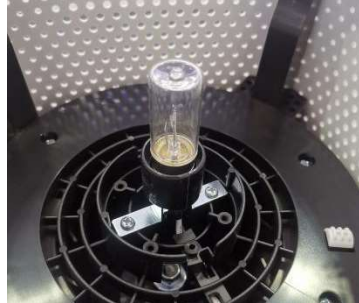

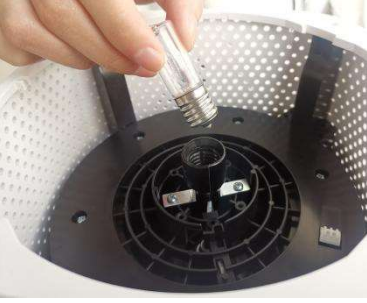

WARNING

Always make sure that the air purifier is turned OFF and UNPLUGGED from power outlet before replacing UV bulb. Always use caution when handling the UV bulb to prevent accidental breaking of the bulb. NEVER touch the glass part of the bulb.

Oil from fingers will reduce the performance of the UV bulb. Always use gloves or handle the bulb only by the metal area on the bulb. Failure to do so may risk shock, fire hazard or damage the unit and replacement lamp.

DO NOT use a vacuum to pick up broken bulb glass or handle broken bulb with your hands. Sweep debris into a plastic bag and dispose properly. Contact your local waste management authority for instruction regarding recycling and the proper disposal of the old bulb(s).

The UV bulb is designed to provide approximately one year continuous operation. After one year the UV bulb's effectiveness is greatly reduced. For maximum protection, replace after a year or if the blue UV bulb does not illuminate when the UV switch is ON.

	<ol style="list-style-type: none"> 1. Unplug the unit and turn it upside down. Remove the base and filter. 2. Slowly loose the screw on the UV lamp enclosure. 3. Gently take out the UV lamp by turning it to the left. 4. Replace the UV lamp with new lamp. DO NOT FORCE. 5. Put the UV lamp enclosure back into the unit and slide both sides of the enclosure bottom into the slots on the enclosure base. Make sure the screw hole on the enclosure align with the one on the enclosure base. Tight the screw back.
	<p>NOTE: The screw can be tighten back into the holes on either side of the enclosure - the one near the safety switch cover or the one on the opposite side.</p> <ol style="list-style-type: none"> 6. Insert filter and reattach the base cover.
	 

MAINTENANCE

CAUTION: Always be sure the purifier is unplugged and switched off before cleaning, removing filter or attempting to store the item. **NEVER PLUG OR UNPLUG THE PURIFIER WITH WET HANDS.**

The filter should be cleaned once a month by a vacuum cleaner. More frequent cleaning may be required depending on the environmental conditions where you live. Use the brush attachment on your vacuum cleaner to remove lint and dirt from the filter.

CLEANING THE AIR PURIFIER

NOTE: No part of the air purifier should be placed in the dishwasher.

1. Always unplug the unit before cleaning.
2. Once unplugged, the exterior of the unit may be cleaned by wiping with a lightly damp cloth.

DO NOT ALLOW WATER TO GET INTO THE INTAKE AND OUTLET GRILLS.

DO NOT USE GASOLINE, POLISH OR ANY CHEMICAL SOLUTION TO CLEAN AIR PURIFIER.

3. The intake grill and outlet grill can be cleaned of dust with a small soft brush.
4. If you wish to lightly clean the inside of the air purifier, please remove filter and **ONLY** use a dry, soft cloth to lightly wipe down.

STORING YOUR PURIFIER

Store the purifier in a dry location. Do not place heavy items on top of the purifier during storage as this may result in possible damage of the appliance. Store the cord in a clean, dry location away from metal objects. Always check the plug before use to assure metal items have not become attached.

CRANE CUSTOMER CARE

CALL US: 888-599-0992 (Mon-Fri 9:00am – 4:00pm CST)
EMAIL US: customer-service@crane-usa.com
LIVE CHAT: available at www.crane-usa.com

TROUBLESHOOTING

DO NOT attempt to repair the air purifier yourself.

If the air purifier continues to not operate, please contact Crane Customer Care.

Problem	Solution
If the air purifier does not operate:	<ul style="list-style-type: none">▪ Make sure the filter is inserted and base cover is screwed into place. There is an automatic safety shut off switch if the filter is not inserted.▪ Make sure the air purifier is at I, II or III.▪ Make sure the power cord is plugged into a working power outlet.▪ If the above solutions do not work, please contact Crane Customer Care.
If the air flow is reduced	<ul style="list-style-type: none">▪ Make sure that the intake and outlet grills are not blocked and are free of debris.▪ Check your HEPA filter, it may need to be replaced.▪ If the above solutions do not work, please contact Crane Customer Care

NOTE: Spare Parts can be purchased online at www.crane-usa.com

CRANE WARRANTY

For more information regarding the warranty policy,
please visit our website: www.crane-usa.com/customer-service

LIMITED WARRANTY

Thank you for purchasing a Crane product which has been tested to meet our stringent quality standards. This product is warranted to be free from manufacturing defects under normal use and conditions for 1 year.

**PLEASE CONTACT US BEFORE RETURNING THIS PRODUCT TO THE STORE.
CALL CRANE CUSTOMER CARE FOR PROBLEMS AND QUESTIONS. WE CAN HELP.**

WARRANTY REQUIRES A DATED PROOF OF PURCHASE.

This warranty is void if the defect is due to accidental damage, misuse, abuse, neglect, improper repair or alteration by unauthorized persons, or a failure to follow operating instructions provided with the product. This warranty does not apply to normal wear and tear or commercial use.

In no event shall liability exceed the purchase price paid by the purchaser of the product. Under no circumstances shall there be liability for any loss – direct, indirect or incidental – or consequential damage arising out of, or in connection with the use of this product.

This warranty is valid only in the 48 contiguous states plus the District of Columbia and excludes Puerto Rico and the Virgin Islands. This warranty is effective only if the product is purchased and operated in the United States of America.

Any instructions or warranty included in this manual may be subject to change without notice. For the most up-to-date instructions and warranty information, please contact us or visit our website.

**TO RECEIVE WARRANTY INSTRUCTIONS AND RETURN AUTHORIZATION,
PLEASE CALL OR EMAIL CRANE CUSTOMER CARE.**

CRANE USA, INC.
1015 Hawthorn Dr., Itasca, IL 60143

Toll Free: 1-888-599-0992 (Monday - Friday 9:00am - 4:00pm CST)
Email: customer-service@crane-usa.com
Website: www.crane-usa.com

Crane

DESIGN FOR BETTER LIVING